



Pretty Little Pots

By Wendy Williams

8. Petula's Pot
Finished size: 4 1/4" x 7 1/2"



Requirements:

Background fabric: 6" x 8 1/2"

Wool: 4" x 3" salmon, 2 1/2" x 2 1/2" watermelon, 1" x 2" bubble-gum, 3" x 3" emerald

80 weight thread (or similar): neutral

Batting: 3" x 3"

Cotton for pot: 3 1/2" x 3 1/2"

Freezer paper

Cutting:

1. Cut out the background fabric 5 ¼" x 8 ½".
The block will be trimmed when finished to 4 ¾" x 8"
2. Cut out the pot (F) in cardboard and batting
3. Cut out the fabric for the pot allowing approx. ½" seam allowance around all edges.

Making:

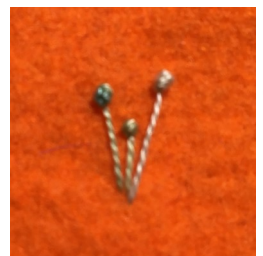
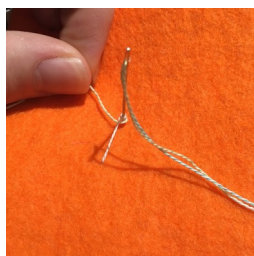
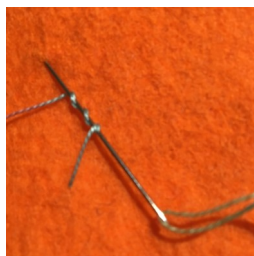
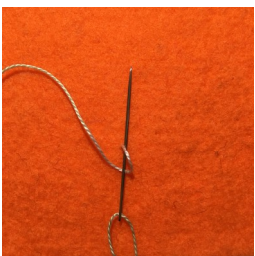
Little Pot

As before

1. Place the batting onto the cardboard pot shape.
2. Place the fabric over the batting and glue to the underside of the cardboard. Try to fold the fabric over as tight as possible.
3. Press the fabric from the right side and then again from the underside. Allow to cool and then carefully remove the cardboard. (a cuticle stick is helpful for this)
4. Using the template as a guide for placement, pin the pot into position.
5. Stitch with small slip stitches to attach the pot to the background.

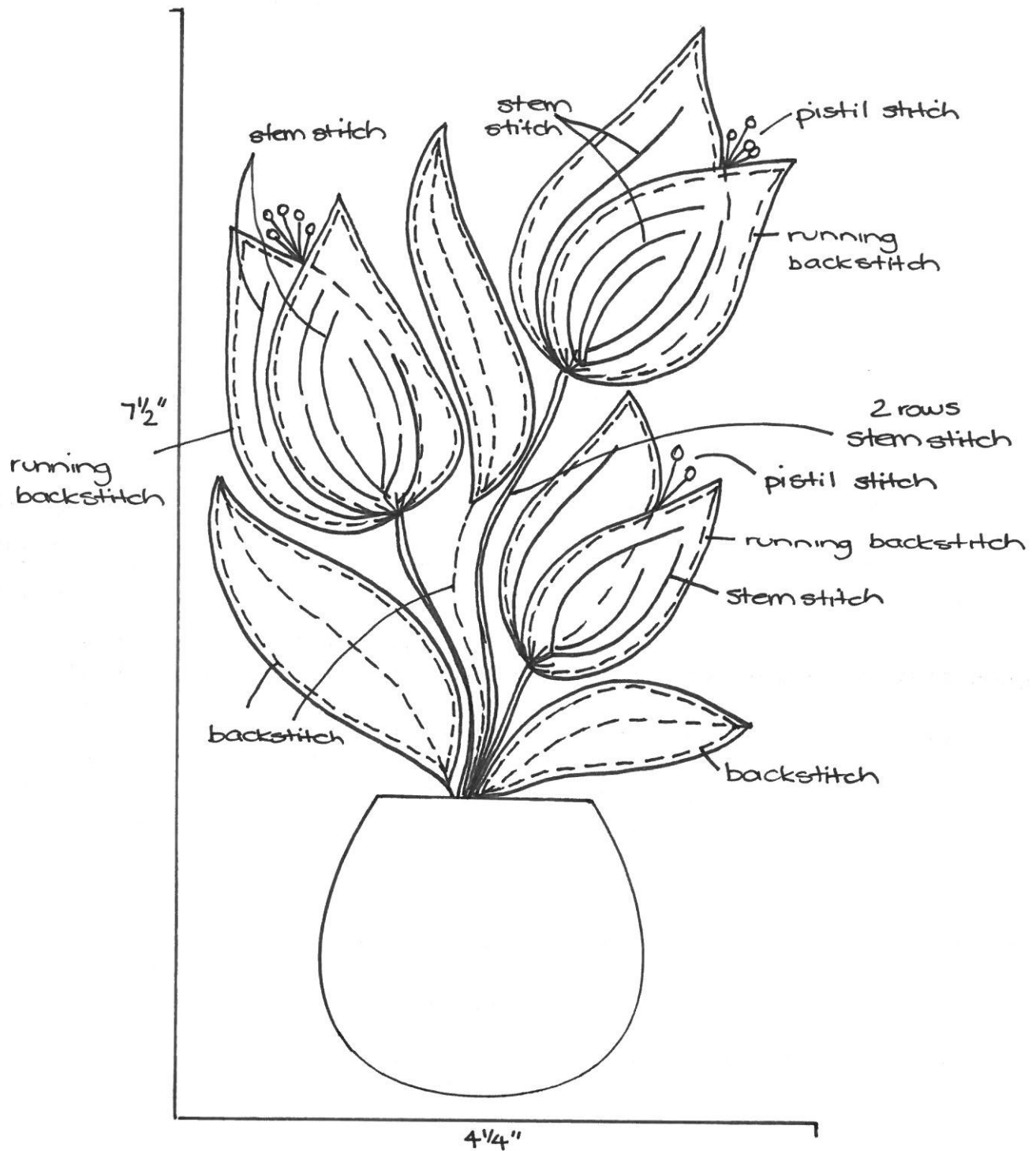
Flowers, leaves and stems

1. Trace the patterns for the flowers and leaves onto freezer paper and cut out. Note that the petals will overlap.
2. Cut out the wool using the freezer paper patterns.
3. Stitch the flowers together with running backstitch overlapping the petals. You will stitch only the part that overlaps, the rest will be stitched when it is applied to the background.
4. Stitch the rows of stem stitch on the flowers.
5. Pin the flowers to the background using the template as a guide for placement. Stitch to the background with running backstitch.
6. Mark on the lines for the stems.
7. Stitch the stems, each with 2 rows of stem stitch. Stitch a few little straight stitches where the stems meet the flowers.
8. Pin and stitch the leaves to the background with backstitch through the centre and around the outer edges. Again, if using felted wool, you might like to whip stitch the edges.
9. Stitch some pistil stitches on the top of the flowers. I do these like colonial knots with 3 wraps. Place the needle away from the beginning of the stitch to create a stitch with the knot on the end.



8. Petula's Pot Templates

Note- the lines are shown to indicate the correct size as a guide for printing.

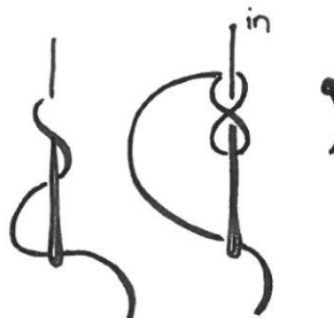


Stitch guide:

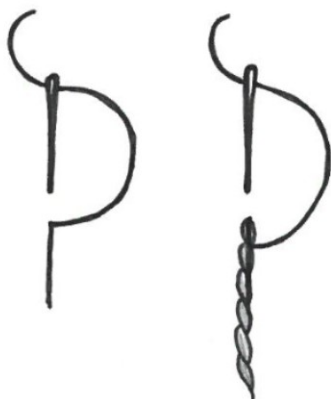
Backstitch:



Pistil Stitch:



Stem Stitch:



Running backstitch:

